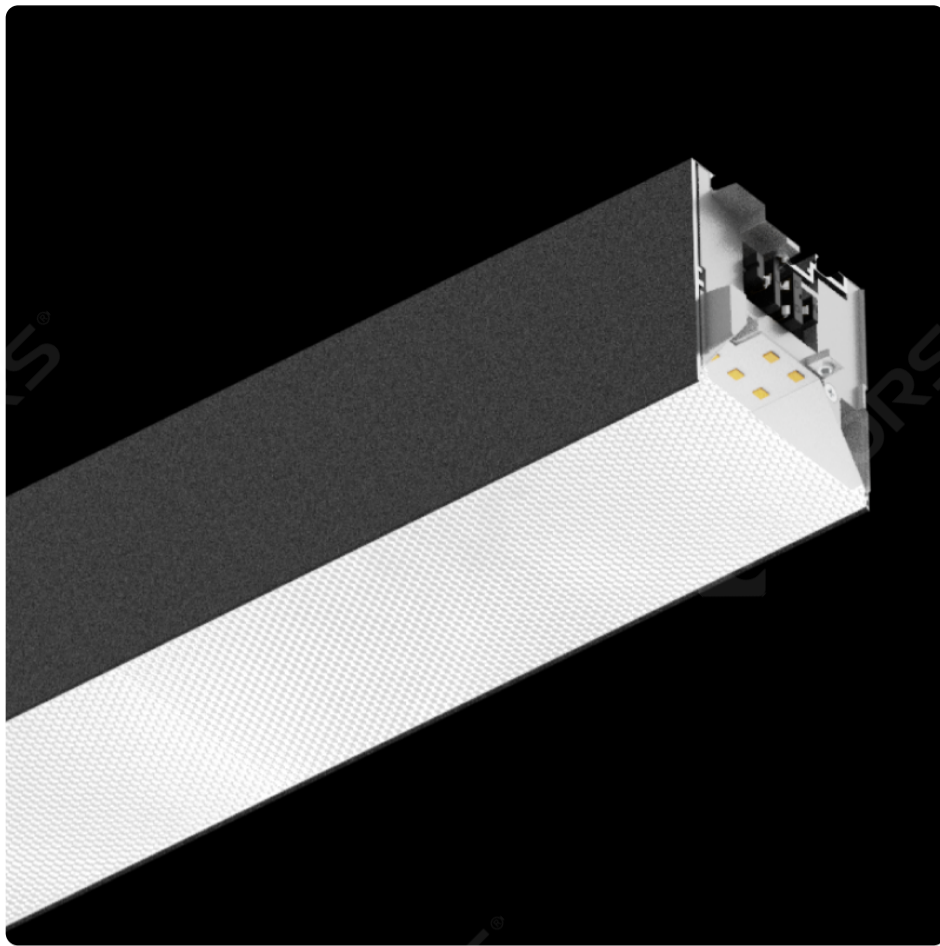


LINE LINK Pendant&Surface

MS70FP





MS70FP

Basic Parameters

Material	AL6063-T5,spraying surface
IP Grade	IP20
Warranty	5 years

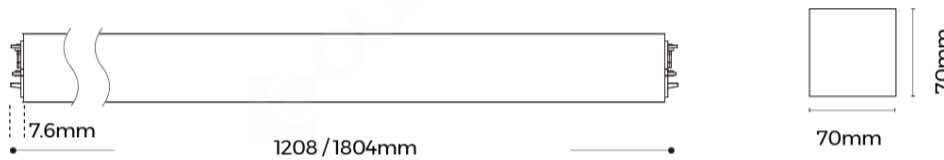
Electrical Parameters

Input Voltage	AC220-240V
Control	Non-Dimming,1-10V Dimming,DALI Dimming

Optical Parameters

Version	Regular,High efficiency,Regular-3 CCT Dial Switch,High efficiency-3 CCT Dial Switch
SDCM	<3 Step (ANSI)
Length	1200mm,1800mm
CRI	>80,>90
CCT	2700K,3000K,4000K,6500K,3000K-4200K-6500K
Luminous Efficacy	110LM/W(Regular),100LM/W(Regular-3 CCT Dial switch) 135LM/W(High efficiency),115LM/W(High efficiency-3CCT Dial switch)

Dimensions



Luminaire Parameters

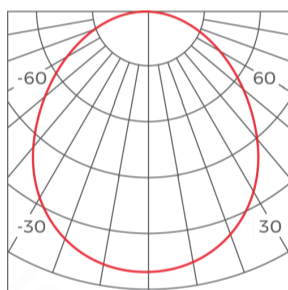
Version	Length	Type Power (W)	PCB Current(A)	CRI	CCT	Lumens(LM) @White, Silver	Lumens(LM) @Black
Regular	1200mm	28W	0.65	>80	4000K	3080	2772
Regular	1800mm	42W	1	>80	4000K	4620	4158
Regular	1200mm	28W	0.65	>90	4000K	2648	2383
Regular	1800mm	42W	1	>90	4000K	3973	3575
High-Efficiency	1200mm	28W	0.65	>80	4000K	3780	3402
High-Efficiency	1800mm	42W	1	>80	4000K	5670	5103
High-Efficiency	1200mm	28W	0.65	>90	4000K	3488	3140
High-Efficiency	1800mm	42W	1	>90	4000K	5233	4710
Regular-3 CCT Dial Switch	1200mm	28W	0.65	>80	3000K-4200K-6500K	2520/2800/2660	2268/2520/2394
Regular-3 CCT Dial Switch	1800mm	42W	1	>80	3000K-4200K-6500K	3780/4200/3990	3402/3780/3591
Regular-3 CCT Dial Switch	1200mm	28W	0.65	>90	3000K-4200K-6500K	2167/2408/2287	1950/2167/2058
Regular-3 CCT Dial Switch	1800mm	42W	1	>90	3000K-4200K-6500K	3250/3612/3354	2925/3250/3018
High efficiency-3 CCT Dial Switch	1200mm	28W	0.65	>80	3000K-4200K-6500K	3080/3220/3220	2772/2898/2898
High efficiency-3 CCT Dial Switch	1800mm	42W	1	>80	3000K-4200K-6500K	4620/4830/4830	4158/4347/4347
High efficiency-3 CCT Dial Switch	1200mm	28W	0.65	>90	3000K-4200K-6500K	2833/2962/2962	2549/2665/2665
High efficiency-3 CCT Dial Switch	1800mm	42W	1	>90	3000K-4200K-6500K	4250/4443/4443	3825/3998/3998
Regular	1200mm	28W	0.65	>80	2700K	2618	2356
Regular	1800mm	42W	1	>80	2700K	3927	3534
Regular	1200mm	28W	0.65	>90	2700K	2251	2026
Regular	1800mm	42W	1	>90	2700K	3377	3039
High-Efficiency	1200mm	28W	0.65	>80	2700K	3591	3231
High-Efficiency	1800mm	42W	1	>80	2700K	5386	4847

High-Efficiency	1200mm	28W	0.65	>90	2700K	3303	2973
High-Efficiency	1800mm	42W	1	>90	2700K	4955	4460
Regular	1200mm	28W	0.65	>80	3000K	2772	2494
Regular	1800mm	42W	1	>80	3000K	4158	3742
Regular	1200mm	28W	0.65	>90	3000K	2383	2145
Regular	1800mm	42W	1	>90	3000K	3575	3218
High-Efficiency	1200mm	28W	0.65	>80	3000K	3780	3402
High-Efficiency	1800mm	42W	1	>80	3000K	5670	5103
High-Efficiency	1200mm	28W	0.65	>90	3000K	3488	3140
High-Efficiency	1800mm	42W	1	>90	3000K	5233	4710
Regular	1200mm	28W	0.65	>80	6500K	3080	2772
Regular	1800mm	42W	1	>80	6500K	4620	4158
Regular	1200mm	28W	0.65	>90	6500K	2648	2383
Regular	1800mm	42W	1	>90	6500K	3973	3575
High-Efficiency	1200mm	28W	0.65	>80	6500K	3780	3402
High-Efficiency	1800mm	42W	1	>80	6500K	5670	5103
High-Efficiency	1200mm	28W	0.65	>90	6500K	3488	3140
High-Efficiency	1800mm	42W	1	>90	6500K	5233	4710

1. The output data is based on the testing result of Ra80,4000k,white luminaires;
2. The tolerance of output data can be vary up to 10%;
3. The output data is typical value;

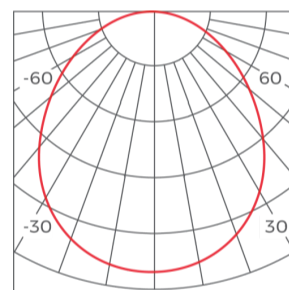
Light Distribution

Regular-90°



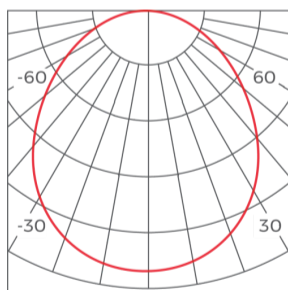
h(m)	D(cm)	E(lx)
1	200	1566
2	401	391
3	602	174
4	802	97

High efficiency-90°



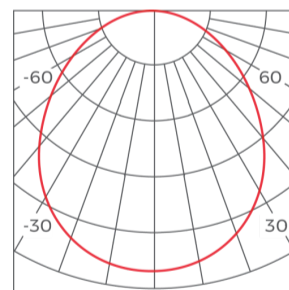
h(m)	D(cm)	E(lx)
1	202	1883
2	404	470
3	607	209
4	809	117

Regular-3 CCT Dial Switch-90°



h(m)	D(cm)	E(lx)
1	202	1278
2	404	319
3	607	142
4	809	79

High efficiency-3 CCT Dial Switch-90°



h(m)	D(cm)	E(lx)
1	201	1488
2	403	372
3	604	165
4	806	93

*The above data is based on a white coated, 1200mm length lamp with Ra80,4000K.

Common Accessories

Standard Corner



MS70FP-L90

Applicable product model: MS70FP
 Installation method: L-shaped 90° splicing
 Material process: AL6063-T5/spraying
 Coating: Black(RAL9006), White(RAL9003)
 Diffuser Nature:Prismatic
 Light efficiency:110LM/W(Regular),100LM/W(Regular-3CCT Dial switch)
 130LM/W(High efficiency),120LM/W(High efficiency-3CCT Dial switch)
 Light source: Constant Current Rigid PCB
 Size: L300*W70*H70mm

Power feeder



CM-27

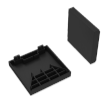
Applicable product model: MS50/MH50/MS70/MH70 Type: Non-dimming Input line(3PIN) Material process: Wiring cover: AL6061/Input line: PVC Size: Wiring cover: 113*23.2*1.5mm/Input line: 2200*φ6mm Quantity: 1PCS/set Others: Including 1pcs wiring cover+1pcs input line



CM-28

Applicable product model: MS50/MH50/MS70/MH70 Type: Dimming Input line(5PIN) Material process: Wiring cover: AL6061/Input line: PVC Size: Wiring cover: 113*23.2*1.5mm/Input line: 2200*φ7.2mm Quantity: 1PCS/set Others: Including 1pcs wiring cover+1pcs input line

End cap accessory



EC-MS70

Applicable product model:MS70/MH70 Material process: ADC12/powder-coated Size: L70.2*W70.7*H17mm Quantity:2PCS/ set

Installation accessory



PN(E)-D

Applicable product model: LINE ECO series
Installation method: Pendant
Material process: Nickel plating
Size: /
Quantity: 2PCS/SET
Other:2 meter wire rope 2PCS, cable locker 2PCS, cable holder 2PCS, M5 flat head Phillips screws 2PCS, M4*35mm screws 2PCS, expansion tube 2PCS



PN-DXX

Applicable product model: LS1911C/LS1911K/LS3535/LS5050/LS3360/LS4067/LS5470(F)/LS7977/LT60/BH3360/BH5470/BH7977/BS3360/BS5470/BS7977/LS5470(F)/LS7977/LT60/LINE40 series product/LINE60 series product/TLS-R6X0 track
Installation method: Pendant
Material process: Pearl Chrome
Size:/
Quantity: 2PCS/ set
Other:Junction box not included, 2 pcs pendant cable accessory, pendant cable length 4m, rectangular screw model.



PY(E)-D

Applicable product model: MS35/MH35/MS50/MH50/MS70/MH70
Installation method: Junction Box (pendant wire)
Material process: SPCC/Spraying surface
Size: Box: D80*30*1mm, Pendant wire: D1.5*2000/4000mm
Quantity: 1 set
Other:Including junction box, 2PCS wire rope, wire rope 2M/4M length optional

Packing

Size (mm/box)	Quantity /box	QTY/CTN	NW (kg/box)	N. WT (ctn)	G.WT (ctn)	Size (cm/carton)	Product Size (mm)
1205*95*80mm	1	4	1.75	7	8.3	122*18.5*17.5	1208*70*70mm
1815*95*80mm	1	4	2.6	10.4	12.1	182*18.5*17.5	1803*70*70mm

Attentions

1. Non-professionals are prohibited from installing, disassembling and repairing the product.
2. Avoid scratching, distortion and irregular bending of the product during installation; otherwise it may cause irreparable damage to the product.
3. Please use professional cutting tools when cutting.
4. Do not use any acid or alkaline adhesive to fix products.
5. The product is only suitable for indoor dry places, can not be used in outdoor, seaside or wet environment.
6. PC features: Each 10°C rise or drop will make diffuser extend or shrink 0.8mm/m, please confirm before processing and use.